

## SAFETY STANDARDS EXHIBITOR GUIDANCE

Considering the covid pandemic that engulfed the globe and the impact it left on all fields of work that require direct interaction, We prepared a quick rundown of everything you'll need to consider, as well as some helpful hints for you and everyone's safety..

WE ARE DEVOTED TO MAKING FACE-TO-FACE EVENTS SAFE AND SUCCESSFUL

## Your health and safety are our priority

The health, safety, and wellbeing of our exhibitors, official delegations, visitors, speakers, contractors, and staff attending the International Aerospace & Defence Exhibition in Djerba - Tunisia is our number one priority. We are working hand-in-hand with the local health authorities, the supervisory authorities, and the airport authority to guarantee you a safe stay.

**IT IS IN THE BEST INTEREST OF EVERYONE CONCERNED THAT THEY MUST BE VACCINATED OR RECOVERED OR TESTED AND PROVIDE A VALID PROOF BEFORE ENTERING THE BUILDING.**

Attendees who cannot provide acceptable proof of their vaccination or a negative COVID test result will be denied entry to the facility or event.

### TESTING ONSITE

A privately operated COVID test center will be available at IADE Tunisia between 10 and 15 May 2022.

If at any time during the event you are feeling unwell, or have any of the following symptoms, please do not attend the event, and obtain a COVID test immediately.

- Fever or chills
- Cough
- Shortness of breath/difficulty breathing
- New loss of taste or smell
- Fatigue
- Runny or stuffy nose
- Muscle or body aches
- Headache
- Sore throat
- Nausea or vomiting, or
- Diarrhea

As national and regional COVID-19 regulations and recommendations continue to change and evolve with the changing international environment, so do the rules and regulations relating to participating in IADE Tunisia. Therefore, please always check these regularly updated reference documents and resources below for the very latest live information.

[www.iadetunisia.com](http://www.iadetunisia.com)

# COVID 19 SAFETY

WHEN YOU PARTICIPATE YOU CAN EXPECT



## PHYSICAL DISTANCING

We will follow physical distancing & crowd density guidelines as directed by the local authorities.



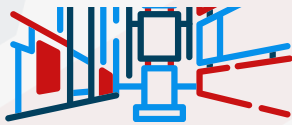
## REGISTRATION

We will minimise waiting times and increase entry points at IADE Tunisia to facilitate quicker admittance to our events.



## CONFERENCE AREAS

Conference and meeting room seating at IADE Tunisia will be set up to follow local distancing guidelines.



## FLOOR PLANNING

We will increase aisle widths and use dedicated travel lanes to help manage traffic.



## FOOD & BEVERAGE

Catering outlets will be designed to uphold health & safety precautions.

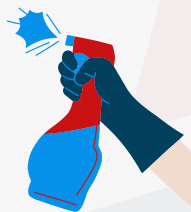


## ADDITIONAL STAFF

We will increase our show teams to and provide additional support where needed.



## VENUE DEEP-CLEAN



## ENHANCED CLEAN SPACES



## HAND SANITISERS



## WASTE MANAGEMENT



## NO HANDSHAKING



## FACE MASKS\*

\*We will take the necessary measures with regards to face coverings based on medical guidance at the time of the show.

## STAND ACTIVITY

### STAND CAPACITY

Consider how many visitors you can safely fit on your stand factoring in your own staff.

Ensure you can identify ways of managing the flow of people around your stand.

### TOUCHING OF PRODUCT

Consider placing coverings on items that may be touched by visitors. If you are conducting demos that require touching, consider one of your team being the only one that carries out the action.

### PRE-ARRANGED APPOINTMENTS

Where possible, schedule any demos and meetings throughout the day and consider the amount of time the meetings are scheduled for to limit exposure to germs.

### CATERING

Consider how catering is managed on your stand. Most caterers will be implementing screening solutions to enable you to continue offering hospitality.

### SIGNS AND SYMBOLS OF GUIDANCE

Consider what signage you may need on your stand to remind staff and customers on your STAND to follow social distancing guidelines. These could include floor stickers or tape to mark areas to help people keep a safe distance.

### SEATING

Ensure there is enough space between seats and meeting areas. Consider screen or physical dividers in spaces where you are likely to have prolonged conversations.

### HAND SANITISER

Please provide your own hand sanitiser on your stand.

### STAND DEEP CLEAN

Ensure a final deeper clean of all items, surfaces, products and spaces at the end of each day.

### PERSONAL PROTECTIVE EQUIPMENT

Please provide your own masks and PPE where necessary.

### TEAM BRIEFING

Ensure you have communicated to your team the arrangements in place and shared the control measures they are required to undertake.